



OTANI

MADE IN THAILAND

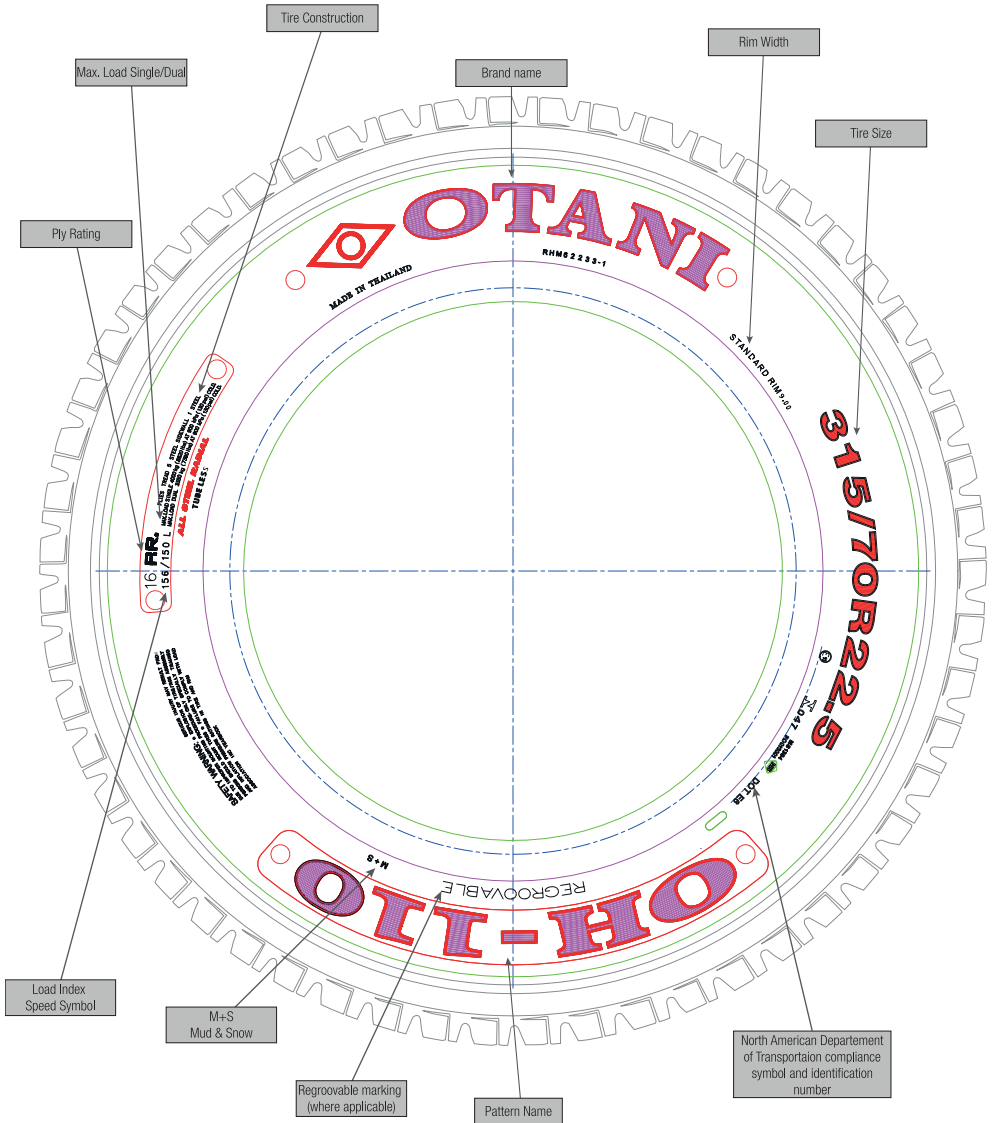


**2018 EURASIA
TBR PATTERN DIGEST**

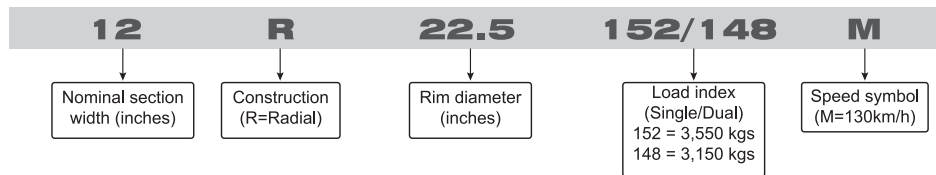
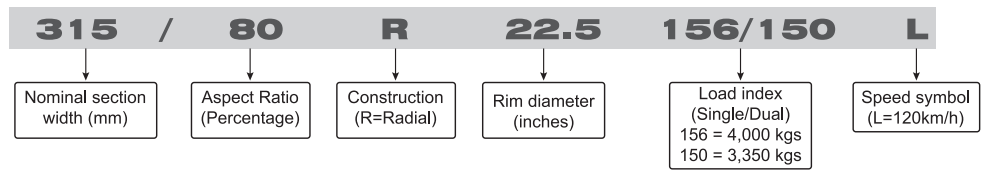
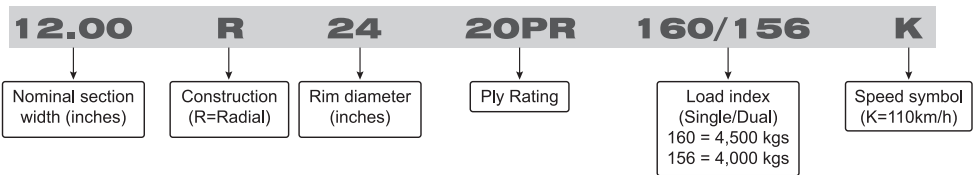
Tire Sidewall Markings

Apart from the brand name and tire size, manufacturers provide some more information that is useful and has its own significance such as, tire's basic dimensions, the week it was produced, load index, inflation pressure, speed rating etc.

In addition to tire patterns and sizes, sidewall markings help in identifying and sorting of the tires based on their specifications. Below drawing and interpretation would help you to better understand the sidewall markings and their meanings.



Interpretation of different types of truck tire sizes



Load Index:

The Load Index is the numerical code associated with the maximum load a tire can carry at the speed indicated by the tire manufacturer

Speed Symbol:

The Speed Symbol indicates the speed at which the tire can carry a load corresponding to its load index under service conditions specified by the tire manufacturer

Load Index equivalent table

Load Index	kg	Load Index	kg	Load Index	kg	Load Index	kg
111	1090	126	1700	141	2575	156	4000
112	1120	127	1750	142	2650	157	4125
113	1150	128	1800	143	2725	158	4250
114	1180	129	1850	144	2800	159	4375
115	1215	130	1900	145	2900	160	4500
116	1250	131	1950	146	3000	161	4625
117	1285	132	2000	147	3075	162	4750
118	1320	133	2060	148	3150	163	4875
119	1360	134	2120	149	3250	164	5000
120	1400	135	2180	150	3350	165	5150
121	1450	136	2240	151	3450	166	5300
122	1500	137	2300	152	3550	167	5450
123	1550	138	2360	153	3650	168	5600
124	1600	139	2430	154	3750	169	5800
125	1650	140	2500	155	3875	170	6000

Speed symbol equivalent table

Speed Symbol	Speed (kph)
F	80
G	90
J	100
K	110
L	120
M	130
N	140

Regrooving

Regrooving is a practice of removing out the rubber from the grooves of a tire, which in turn creates extra tread depth to deliver key benefits to the end users.

Benefits:

- Increases the mileage by approximately 25%
- Lowers cost per kilometer
- Increases the road grip significantly, particular in wet surface

Things to Consider

- Only the tires that are marked as 'Regroovable' on their sidewalls can be regrooved
- Make sure that the tire has around 2 to 4 mm tread still remaining
- Steel should not be exposed while regrooving
- Manufacturer's regrooving guidelines should be followed
- Only the skilled / trained personnel should carry out this process



All OTANI tires are designed with sufficient under tread that allows Regrooving without affecting the casing strength. For a detailed demonstration of the Regrooving process, kindly watch our video in the below link:

URL: <https://youtu.be/Y1BwLnP5Ny4>

Retreading

A process of revamping the tires where the treads of worn tires are replaced with the new ones, which is also called recapping or remolding of tires. New treads are applied to the casings of old tires with the sole aim of giving a new lease of life. Casings should be durable enough to withstand multiple retreads over time to offer the following benefits.





Benefits:

- Get 80% of new tire mileage with 40% of new tire cost spent on retreading
- Significant reduction in cost per kilometer
- Reducing the disposal in landfills
- Lesser consumption of raw materials
- Lowering the CO₂ emissions

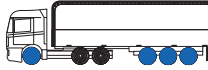


OTANI strongly recommends retreading which usually yields 30% lesser cost per kilometer as compared to the new tires, where the more retreads are applied to the original tire, the more value you are drawing out of the initial investment you made on the tire. Applying new treads is just like having a new tire, where the grip and traction improves, rolling resistance drops that in turn causes less pressure on the engine and yields more mileage while consuming less fuel.

Application Guide

	Steer/All Position	Drive	Trailer
<p>Long Haul</p> 	<p>OH-101 SUPER OH-102 OH-109 OH-115 OH-119</p>	<p>OH-311 OH-319</p>	<p>OH-108 OH-111</p>
<p>Regional</p> 	<p>OH-101 OH-115 OH-107 OH-119 OH-110 OH-112</p>	<p>OH-301 OH-311 OH-320</p>	
<p>Mixed (on/off)</p> 	<p>OH-201 OH-207 OH-203 OH-209 OH-204</p>		
<p>Off Road</p> 		<p>OH-312 OH-402</p>	

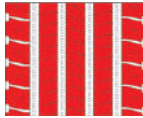
OH-101



All position tire for Regional applications



Lugs on shoulders withstand impacts and enhance traction performance



Uneven Wear Resistance Design & Special Low temperature Compound

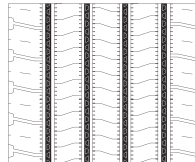


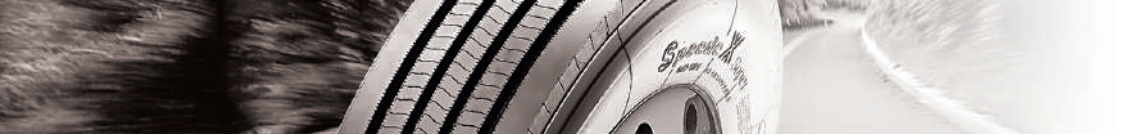
Wide & Extra deep tread delivers long mileage

Size	PR	Load Index	Speed Symbol	Tread Depth	RR	Wet Grip	Pass By Noise	Grade
				mm				
11 R22.5	16	148/145	M	17.0	D	B	72	
12 R22.5	16	152/148	M	16.0	D	B	72	
275/80 R22.5	16	149/146	M	16.0	D	B	72	
295/80 R22.5	16	152/148	M	17.0	D	B	72	
315/80 R22.5	20	156/150	L	17.0	D	B	72	

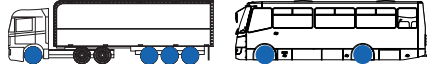
Regrooving Guidelines

Size	D: Regrooving Depth (mm)	W: Regrooving Width (mm)
11 R22.5	2.5	6.0 - 7.0
12 R22.5	2.5	7.0 - 8.0
275/80 R22.5	2.5	6.0 - 7.0
295/80 R22.5	2.5	7.0 - 8.0
315/80 R22.5	2.5	7.0 - 8.0





OH-101 SUPER



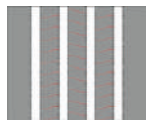
All Position Tire, especially designed for Steer Axle positions for Longhaul applications



Closed & Solid Shoulder Ribs combat irregular wear, thereby ensuring longer tread mileage



4 straight circumferential grooves evacuate water effectively ensuring good road grip

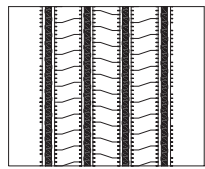


Optimal footprint & arrangement of sipes help in superior maneuverability

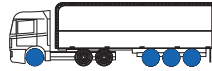
Size	PR	Load Index	Speed Symbol	Tread Depth	RR	Wet Grip	Pass By Noise	Grade
				mm				
315/80 R22.5	20	156/150	L	17.0	D	A	71	

Regrooving Guidelines

Size	D: Regrooving Depth (mm)	W: Regrooving Width (mm)
315/80 R22.5	2.5	7.0 - 8.0



OH-102

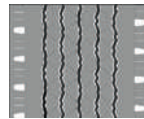


M+S

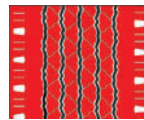
All Position Tire for Longhaul applications



Innovative Stepped Ribs increase Traction ability



Special compound reduce heat build up when running on the high speed

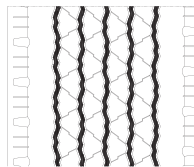


Wider tread for maximum wear resistance and improved mileage

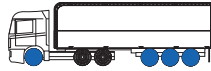
Size	PR	Load Index	Speed Symbol	Tread Depth	RR	Wet Grip	Pass By Noise	Grade
				mm				
385/65 R22.5	20	160	K	15.0	C	B	73	

Regrooving Guidelines

Size	D: regrooving Depth (mm)	W: regrooving Width (mm)
385/65 R22.5	2.5	7.0 - 8.0



OH-107



M+S

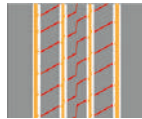
All-Position tire for Regional Haul Service of trucks and buses



Five ribs & four straight and wide grooves for Excellent Traction and Precise Handling



Solid Shoulder Ribs & Special Tread compound resists maneuvering scrub

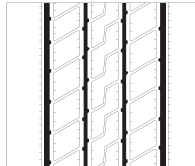


Linear grooves help in quicker drainage of water and kerfs on the inner ribs enhance traction

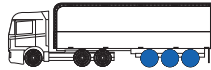
Size	PR	Load Index	Speed Symbol	Tread Depth	RR	Wet Grip	Pass By Noise	Grade
				mm				
11 R22.5	16	148/145	M	15.0	D	B	71	
12 R22.5	16	152/148	M	16.0	D	B	71	
275/70 R22.5	16	148/145	M	15.0	D	B	71	
295/80 R22.5	16	152/148	M	15.0	D	B	71	
315/80 R22.5	20	156/150	L	15.0	D	B	71	

Regrooving Guidelines

Size	D: regrooving Depth (mm)	W: regrooving Width (mm)
11 R22.5	2.5	6.0 - 7.0
12 R22.5	2.5	7.0 - 8.0
275/70 R22.5	2.5	6.0 - 7.0
295/80 R22.5	2.5	7.0 - 8.0
315/80 R22.5	2.5	7.0 - 8.0



OH-108

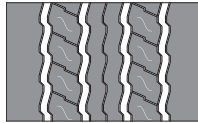


M+S FRT

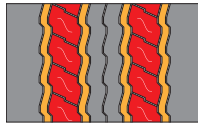
Trailer Tire for Longhaul applications



Reinforced Construction increases performance both on Overloading and High Speed Service



Special Compound ensures longer mileage and rugged casing withstands multiple retreads



Unique shaped tread blocks and grooves offer superior grip on dry and wet surfaces

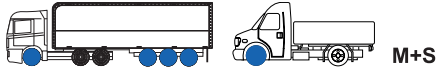
Size	PR	Load Index	Speed Symbol	Tread Depth	RR	Wet Grip	Pass By Noise	Grade
				mm				
285/70 R19.5	18	150/148	J	14.0	D	B	73	
385/55 R22.5	20	160	K	13.0	D	B	73	
385/65 R22.5	20	160	K	14.5	D	B	73	

Regrooving Guidelines

Size	D: Regrooving Depth (mm)	W: Regrooving Width (mm)
285/70 R19.5	2.5	7.0 - 8.0
385/55 R22.5	2.5	8.0 - 9.0
385/65 R22.5	2.5	8.0 - 9.0



OH-109



All position tire for Longhaul applications



Wider tread pattern lead to enhanced contact patch area that reduces wear rate



Solid, wide & closed shoulder ribs resist scrubbing while maneuvering

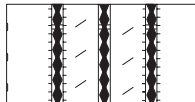


Wider circumferential grooves help in effective water drainage and sipes on inner ribs help in efficient braking

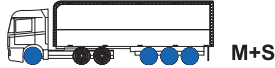
Size	PR	Load Index	Speed Symbol	Tread Depth	RR	Wet Grip	Pass By Noise	Grade
				mm				
215/75 R17.5	12	126/124	M	10.0	D	B	71	
215/75 R17.5	16	135/133	K	10.0	D	B	71	

Regrooving Guidelines

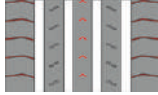
Size	D: regrooving Depth (mm)	W: Regrooving Width (mm)
215/75 R17.5	2.5	7.0-8.0



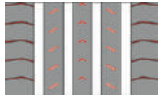
OH-110



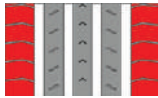
All Position Tire, especially designed for Steer Axle positions for Regional applications



Uni-directional tread design that delivers extremely good handling in wet weather conditions



Specially designed sipes deliver improved traction and grip, thereby reducing braking distance both in dry and wet conditions



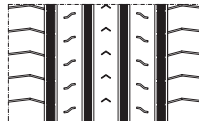
Wider shoulders enhance resistance against impact damages



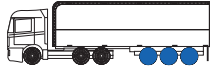
Size	PR	Load Index	Speed Symbol	Tread Depth	RR	Wet Grip	Pass By Noise	Grade
				mm				
315/70 R22.5	16	154/150	L	15.0	D	B	72	

Regrooving Guidelines

Size	D: regrooving Depth (mm)	W: Regrooving Width (mm)
315/70 R22.5	2.5	8.0-9.0

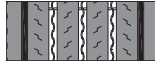


OH-111



M+S FRT

Exclusively designed for Free Rolling Trailer Axle positions for Longhaul applications



Optimal rolling friction due to energy efficient compound



Robust & Rugged construction withstands severe loading



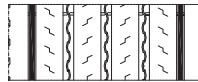
Wider tread pattern lead to optimal footprint area that reduces wear rate



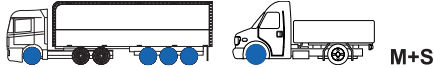
Size	PR	Load Index	Speed Symbol	Tread Depth	RR	Wet Grip	Pass By Noise	Grade
				mm				
385/55 R19.5	18	156	J	14.0	D	B	73	

Regrooving Guidelines

Size	D: regrooving Depth (mm)	W: regrooving Width (mm)
385/55 R19.5	2.5	8.0-9.0



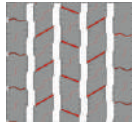
OH-112



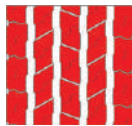
All position tire for Regional applications



Specially designed shoulders help in preventing heel & toe wear ensuring longer life



Optimal placement of sipes deliver improved traction and grip, thereby reducing braking distance both in dry and wet conditions

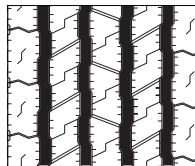


Versatile tread design with stepped ribs ensure improved handling and driving stability

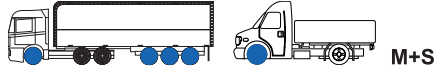
Size	PR	Load Index	Speed Symbol	Tread Depth	RR	Wet Grip	Pass By Noise	Grade
				mm				
7.00 R16	12	117/116	L	13.0	E	B	70	
7.50 R16	14	122/118	L	13.0	E	B	70	
9.5 R17.5	14	129/127	L	14.0	E	B	70	
9.5 R17.5	18	143/141	J	14.0	E	B	70	
215/75 R17.5	12	126/124	M	14.0	E	B	70	
215/75 R17.5	16	135/133	K	14.0	E	B	70	
225/80 R17.5	14	123/122	L	13.0	E	B	70	

Regrooving Guidelines

Size	D: Regrooving Depth (mm)	W: Regrooving Width (mm)
7.00 R16	2.5	5.0 - 6.0
7.50 R16	2.5	5.0 - 6.0
9.5 R17.5	2.5	7.0 - 8.0
215/75 R17.5	2.5	7.0 - 8.0
225/80 R17.5	2.5	7.0 - 8.0



OH-115



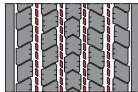
All Position Tire for Long Haul and Regional applications



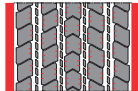
Five rib pattern maximizes surface contact and bears load evenly



Unique, wider pattern prevents irregular wear and enhances tire life



Stone ejectors on each groove prevent retention of stones, hence ensuring better traction and grip

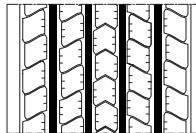


Unique shoulder design and sipes on center ribs offer enhanced wet braking and steering

Size	PR	Load Index	Speed Symbol	Tread Depth	RR	Wet Grip	Pass By Noise	Grade
				mm				
215/75 R17.5	12	126/124	M	12.0	D	B	70	
215/75 R17.5	16	135/133	K	12.0	D	B	70	
215/75 R17.5	18	143/141	J	12.0	D	B	70	
235/75 R17.5	14	132/130	M	13.0	D	B	70	
235/75 R17.5	18	143/141	J	13.0	D	B	70	

Regrooving Guidelines

Size	D: Regrooving Depth (mm)	W: Regrooving Width (mm)
215/75 R17.5	2.5	7.0 - 8.0
235/75 R17.5	2.5	7.0 - 8.0



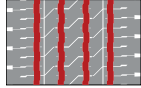
NEW

OH-119



M+S

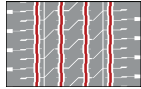
Steer Axle Tire for Regional & Long Haul applications



Optimized groove design for Long haul-Regional usage



Solid shoulder design for better handling and steering performance

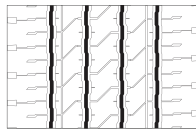


Stone ejectors in all grooves protect crown area from stone penetration for safe driving

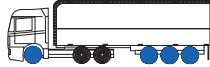
Size	PR	Load Index	Speed Symbol	Tread Depth	RR	Wet Grip	Pass By Noise	Grade
				mm				
385/65 R22.5	20	160	K	15.0	C	A	72	

Regrooving Guidelines

Size	D: Regrooving Depth (mm)	W: Regrooving Width (mm)
385/65 R22.5	2.5	7.0 - 8.0



OH-201

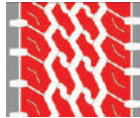


M+S

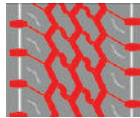
All Position Tire for Mixed Service applications



Lugs on shoulders withstand impacts and enhance traction performance in both dry and wet conditions



Special Zigzag tread design that offers extra-ordinary resistance against chipping and cutting in off road conditions

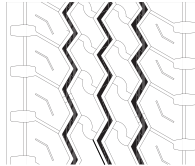


Deeper tread delivers longer mileage and wider grooves help in effective water evacuation

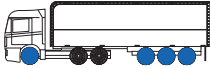
Size	PR	Load Index	Speed Symbol	Tread Depth	RR	Wet Grip	Pass By Noise	Grade
				mm				
11 R22.5	16	148/145	L	16.0	D	B	73	
295/80 R22.5	16	152/148	M	15.0	D	B	73	
315/80 R22.5	20	156/150	L	15.0	D	B	73	

Regrooving Guidelines

Size	D: Regrooving Depth (mm)	W: Regrooving Width (mm)
11 R22.5	2.5	7.0 - 8.0
295/80 R22.5	2.5	7.0 - 8.0
315/80 R22.5	2.5	7.0 - 8.0

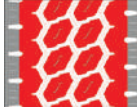


OH-203

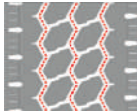


M+S

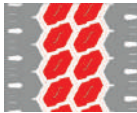
All Position Tire for Mixed applications



Special zigzag tread design resists cuts & chips in mixed service applications



Stone ejectors in all 3 grooves protect the tire from stone retention improving retreadability

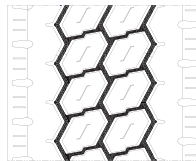


Innovative tread block design and well positioned sipes give remarkable traction in all weather conditions

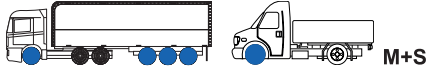
Size	PR	Load Index	Speed Symbol	Tread Depth	RR	Wet Grip	Pass By Noise	Grade
				mm				
385/65 R22.5	20	160	K	16.0	D	B	73	

Regrooving Guidelines

Size	D: regrooving Depth (mm)	W: regrooving Width (mm)
385/65 R22.5	2.5	8.0 - 9.0



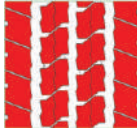
OH-204



All Position Tire for Mixed service applications



Specially Engineered belt structure enhance casings durability



Well positioned tread blocks deliver enhanced traction on dry & wet surfaces

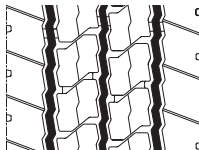


Optimum bead strength to withstand severe stress and deliver stable driving

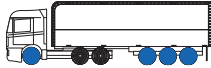
Size	PR	Load Index	Speed Symbol	Tread Depth	RR	Wet Grip	Pass By Noise	Grade
				mm				
265/70 R19.5	18	143/141	J	14.0	D	A	72	

Regrooving Guidelines

Size	D: regrooving Depth (mm)	W: regrooving Width (mm)
265/70 R19.5	2.5	7.0 - 8.0

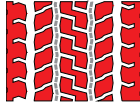


OH-207



M+S

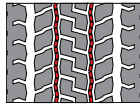
All Position Tire for Mixed service applications



Unique 5-rib pattern improves contact area and delivers longer mileage



Four circumferential linear grooves ensure quick water evacuation and give firm road grip



Presence of stone ejectors avoids retention of stones

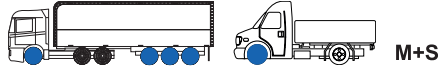
Size	PR	Load Index	Speed Symbol	Tread Depth	RR	Wet Grip	Pass By Noise	Grade
				mm				
215/75 R17.5	12	126/124	M	13.0	E	C	71	

Regrooving Guidelines

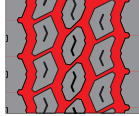
Size	D: regrooving Depth (mm)	W: regrooving Width (mm)
215/75 R17.5	2.5	6.0 - 7.0



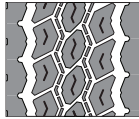
OH-209



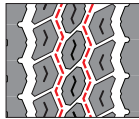
All Position Tire for Mixed service applications



Deeper tread assists in increasing mileage and service life of the tires



Siping on the large tread blocks delivers outstanding traction and abrasion resistance capability

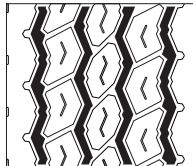


Stone ejectors placed in central grooves prevent retention of stones

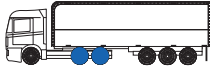
Size	PR	Load Index	Speed Symbol	Tread Depth	RR	Wet Grip	Pass By Noise	Grade
				mm				
315/80 R22.5	20	156/150	L	15.0	C	B	73	

Regrooving Guidelines

Size	D: Regrooving Depth (mm)	W: Regrooving Width (mm)
315/80 R22.5	2.5	7.0 - 8.0



OH-30 1



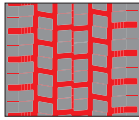
M+S



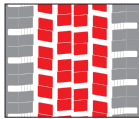
Drive Axle tire for Regional applications



Wide open shoulder grooves deliver additional traction



Deeper grooves give longer mileage & better water evacuation

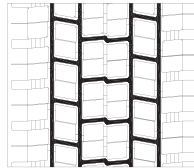


Well positioned tread blocks deliver enhanced traction on dry & wet surfaces

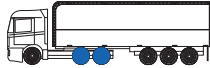
Size	PR	Load Index	Speed Symbol	Tread Depth	RR	Wet Grip	Pass By Noise	Grade
				mm				
11 R22.5	16	148/145	M	19.0	E	C	75	
12 R22.5	16	152/148	M	22.0	E	C	75	
295/80 R22.5	16	152/148	M	22.0	E	C	75	
315/70 R22.5	16	154/150	L	22.0	E	C	75	
315/80 R22.5	20	156/150	L	22.0	E	C	75	

Regrooving Guidelines

Size	D: Regrooving Depth (mm)	W: Regrooving Width (mm)
11 R22.5	2.5	6.0 - 7.0
12 R22.5	2.5	7.0 - 8.0
295/80 R22.5	2.5	7.0 - 8.0
315/70 R22.5	2.5	7.0 - 8.0
315/80 R22.5	2.5	7.0 - 8.0



OH-311



M+S



Drive Axle Tire for Longhaul & Regional applications



Creative design of 5 Lug pattern built for firm grip and cornering ability



Open shoulder design that ensures quicker evacuation of water delivering good road grip



Deeper and wider grooves increases mileage and enhances service life



Uniform tread block design gives sheer ability to bear load evenly

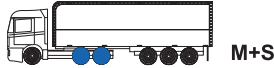
Size	PR	Load Index	Speed Symbol	Tread Depth	RR	Wet Grip	Pass By Noise	Grade
				mm				
9.5 R17.5	14	129/127	L	14.0	E	C	70	
9.5 R17.5	18	143/141	J	14.0	E	C	70	
215/75 R17.5	14	128/126	M	13.0	E	C	70	
215/75 R17.5	16	135/133	K	13.0	E	C	70	
235/75 R17.5	14	132/130	M	13.0	E	C	70	
235/75 R17.5	18	143/141	J	13.0	E	C	70	

Regrooving Guidelines

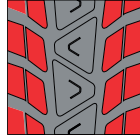
Size	D: Regrooving Depth (mm)	W: Regrooving Width (mm)
9.5 R17.5	2.5	5.0 - 6.0
215/75 R17.5	2.5	5.0 - 6.0
235/75 R17.5	2.5	5.0 - 6.0



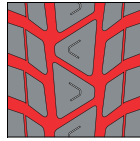
OH-312



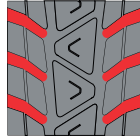
Drive Axle Tire for off-road applications



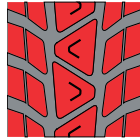
Open shoulder design that ensures quicker evacuation of water delivering good road grip



Deeper and wider grooves increases mileage and enhances service life



Large Lugs, cut & chip resistant compound withstand severe conditions in gravel / construction usage

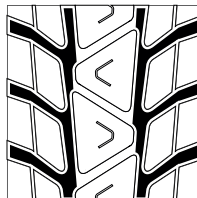


Aggressive tread pattern that delivers outstanding traction in tough conditions

Size	PR	Load Index	Speed Symbol	Tread Depth	RR	Wet Grip	Pass By Noise	Grade
				mm				
11 R22.5	16	148/145	K	21.0	EU homologation under progress			
12 R22.5	18	152/149	K	23.0				
13 R22.5	18	156/150	K	22.0				
295/80 R22.5	16	152/148	K	21.0	E	C	76	
315/80 R22.5	20	156/150	K	22.0	E	C	76	

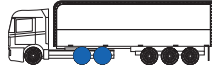
Regrooving Guidelines

Size	D: Regrooving Depth (mm)	W: Regrooving Width (mm)
11 R22.5	2.5	7.0 - 8.0
12 R22.5	2.5	7.0 - 8.0
13 R22.5	2.5	7.0 - 8.0
295/80 R22.5	2.5	7.0 - 8.0
315/80 R22.5	2.5	7.0 - 8.0



NEW

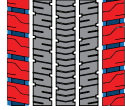
OH-319



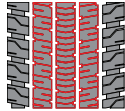
M+S



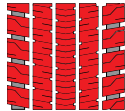
Drive Axle Tire for Long Haul applications



Closed shoulder with shallow lateral grooves offer excellent resistance against irregular wear



5 Ribs pattern & Wider rolling tread delivers longer mileage

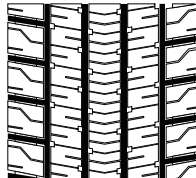


Optimized pattern design for lower noise

Size	PR	Load Index	Speed Symbol	Tread Depth	RR	Wet Grip	Pass By Noise	Grade
				mm				
315/70 R22.5	16	154/150	L	16.5	D	C	74	
315/80 R22.5	20	156/150	L	16.5	D	C	74	

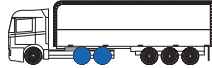
Regrooving Guidelines

Size	D: Regrooving Depth (mm)	W: Regrooving Width (mm)
315/70 R22.5	2.5	7.0 - 8.0
315/80 R22.5	2.5	7.0 - 8.0



NEW

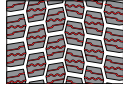
OH-320



M+S



Drive Axle Tire for Regional applications



Unique sipes on all tread blocks enhance wet grip & snow grip performance



Optimized block design resists irregular wear (Heel & Toe wear)

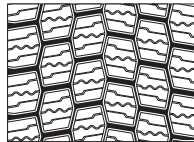


Zig-Zag grooves offer excellent traction on all road conditions

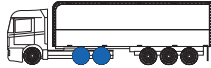
Size	PR	Load Index	Speed Symbol	Tread Depth	RR	Wet Grip	Pass By Noise	Grade
				mm				
315/70 R22.5	16	154/150	L	21.5	D	C	74	
315/80 R22.5	20	156/150	L	21.5	D	C	74	

Regrooving Guidelines

Size	D: regrooving Depth (mm)	W: regrooving Width (mm)
315/70 R22.5	2.5	7.0 - 8.0
315/80 R22.5	2.5	7.0 - 8.0



OH-402



M+S



POR
(Professional Off Road)

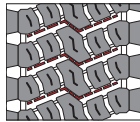
Drive Axle Tire for off-road applications



Open shoulder design enhances heat dissipation and evacuates water quickly



Uniform block pattern with a wider tread design maximizes surface contact, withstands heavy load, and prevents uneven wear

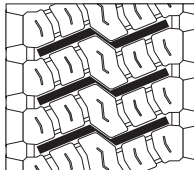


Presence of stone ejectors avoids retention of stones

Size	PR	Load Index	Speed Symbol	Tread Depth	RR	Wet Grip	Pass By Noise	Grade
				mm				
315/80 R22.5	20	156/150	K	21.0	Not Applicable for POR Category			

Regrooving Guidelines

Size	D: regrooving Depth (mm)	W: regrooving Width (mm)
315/80 R22.5	2.5	8.0 - 9.0





www.otanityre.com

