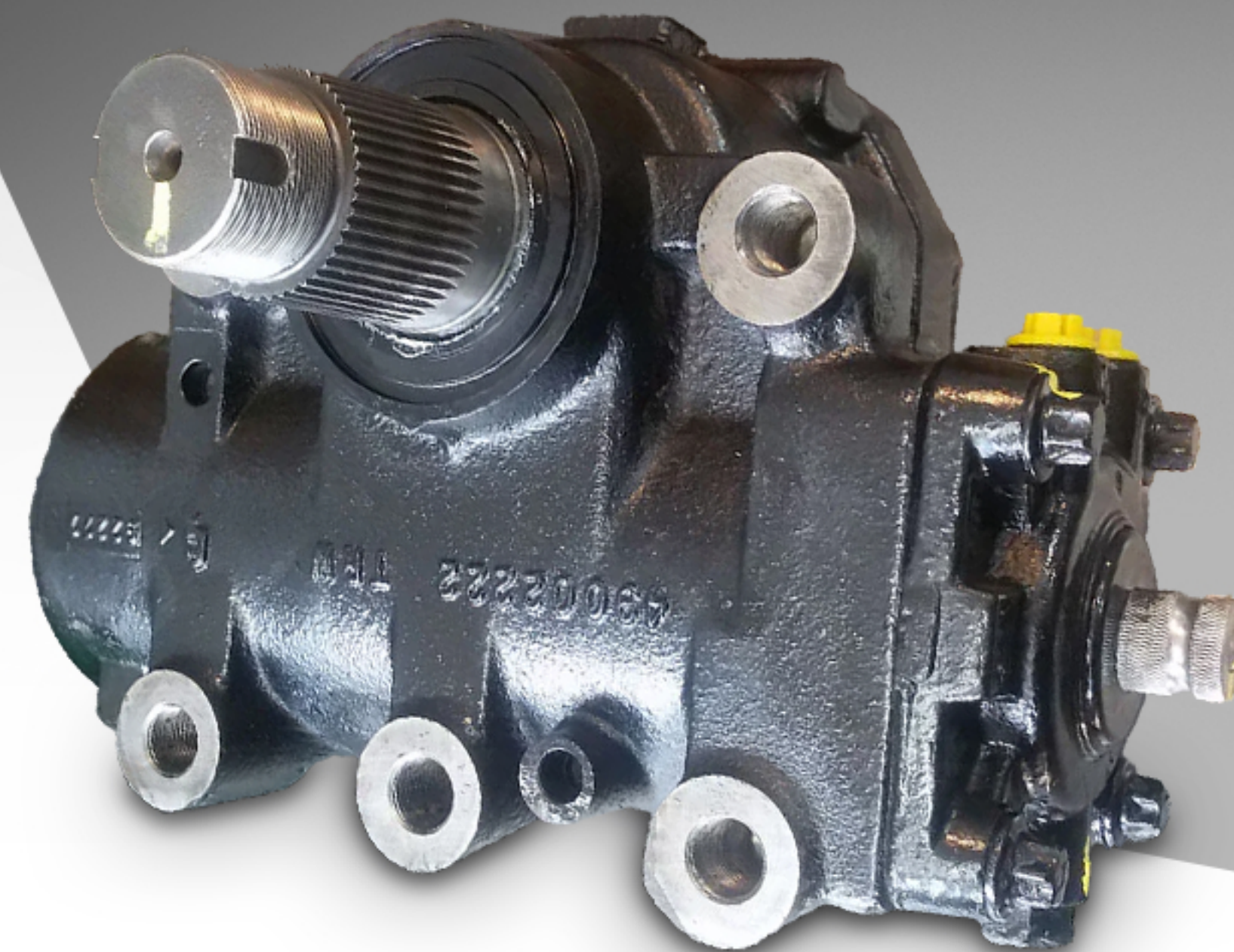




# ACCEPTANCE CRITERIA FOR USED STEERING GEARS



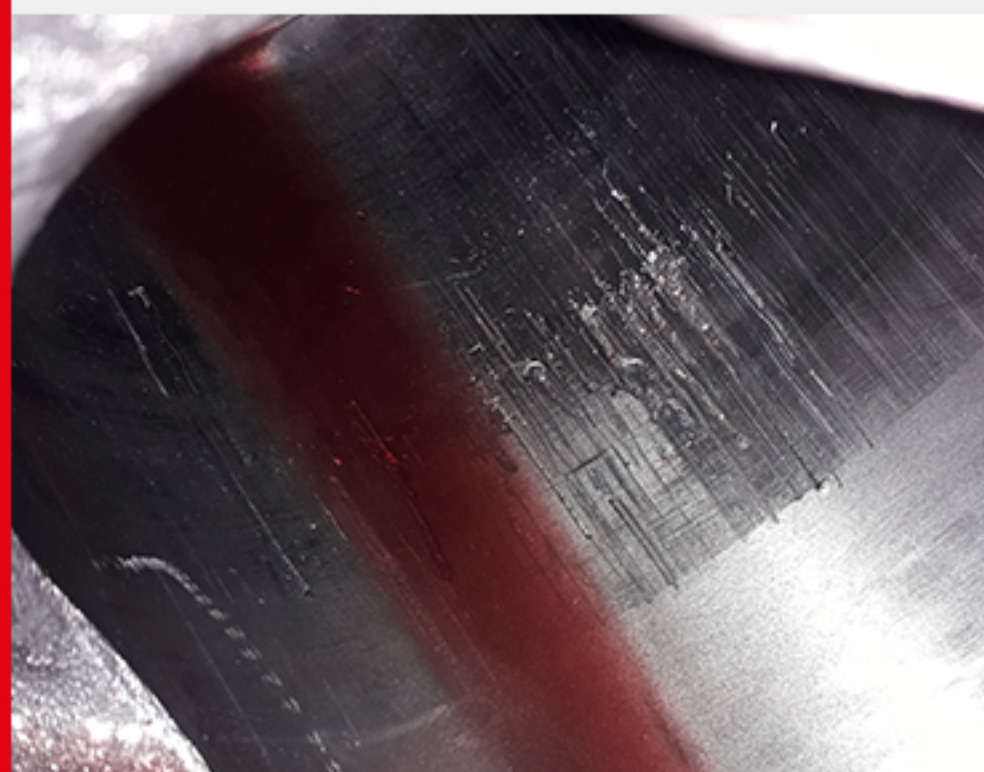
WE ACCEPT



WE DO NOT ACCEPT

after verification of the inside of the gear:

- damaged body inside,
- abrasions and damaged shaft, worm.



Cut roller



Crooked roller



**Additional information:** Returns of gear cores should be packed in boxes