

[illegible]

Basic criterion for using of the core in remanufacturing process is completeness (body and throttle). Core could not be also mechanically damaged.

EGR cooler need to be visual inspected before sending back to AVA CEE. Body, assembling and screw holes shall not be broken, cracked.

Cross and longitudinal welds on the body are not allowed. EGR cooler affected by truck or engine fire.

Check throttle flaps if complete and assembled.

Secondly, check the throttle if there is a valve on it and, just like in the case of the body, check its mechanical condition. The recirculator should be complete and not disassembled into its components. The openings should be plugged in such a way as to prevent leakage of residual fluids during transport. They should also be packed in a box after the new module and protected against damage.

Complete EGR cooler is shown on below picture.

		Checked: S.C	Approved	Date 2021.05.06	document number IP/085/1					
Review									supervised copy	

No

2

instruction EGR core remanufacturing criterions

General requirements



Throttle - 1

1. Can not be mechanical damaged, broken, deformed
2. Can not be corroded or affected by engine fire
3. Has to be equipped with valve see photos 1, 2 and 3

Body - 2

1. Can not be mechanical damaged, broken, deformed
2. Can not be corroded or affected by engine fire
3. assembling points can not be mechanical damaged, broken Photos 4-13

		Checked: S.C	Approved	Date 2021.05.06	document number IP/085/1				
Review								supervised copy	

No

3

instruction EGR core remanufacturing criterions

photos 1-3 - throttle and body - OK



		Checked: S.C	Approved	Date 2021.05.06	document number IP/085/1				
Review								supervised copy	

No

4

instruction EGR core remanufacturing criterions



Pic. 4



Pic.5

photos 4-13 -
throttle and body - NOK



Pic.6



Pic. 7

		Checked: S.C	Approved	Date 2021.05.06	document number IP/085/1				
Review								supervised copy	

No

5

instruction EGR core remanufacturing criterions



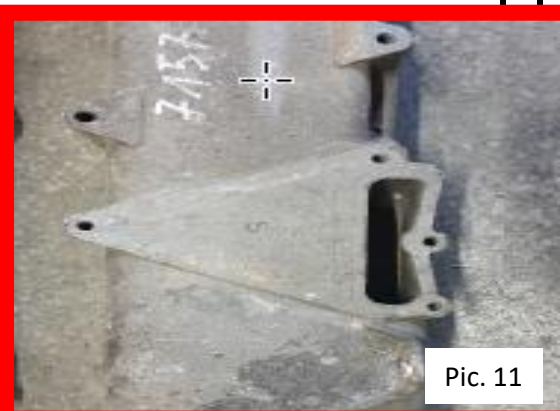
Pic. 8



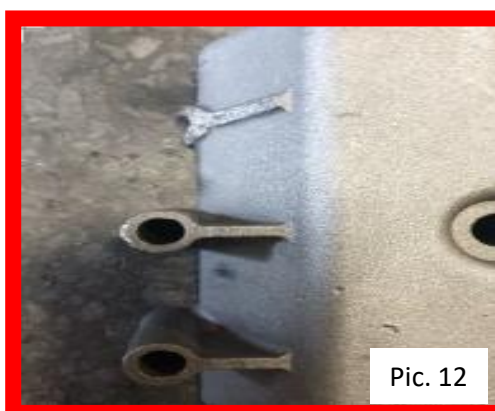
Pic. 9



Pic. 10



Pic. 11



Pic. 12



Pic. 13