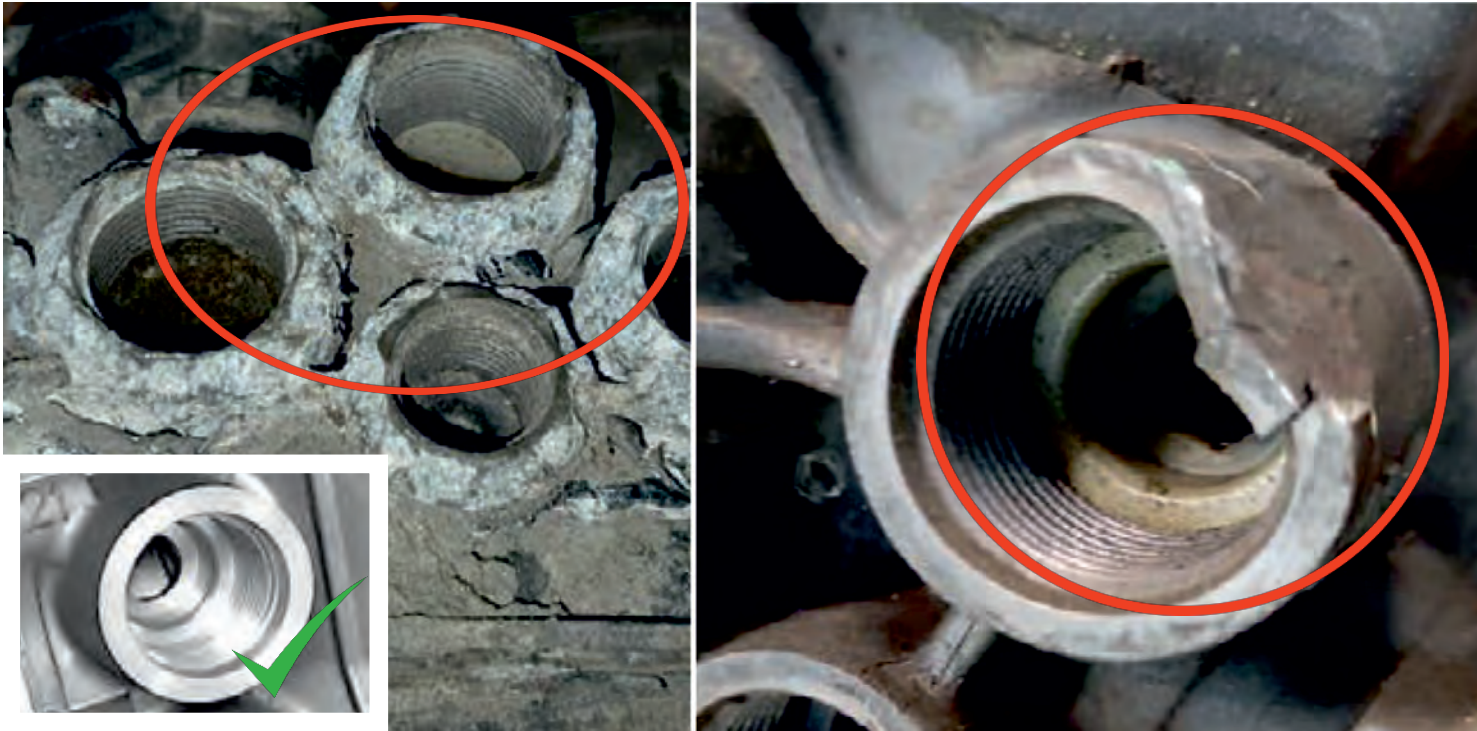


GENERAL TERMS AND CONDITIONS FOR RETURNING THE EBS CORE

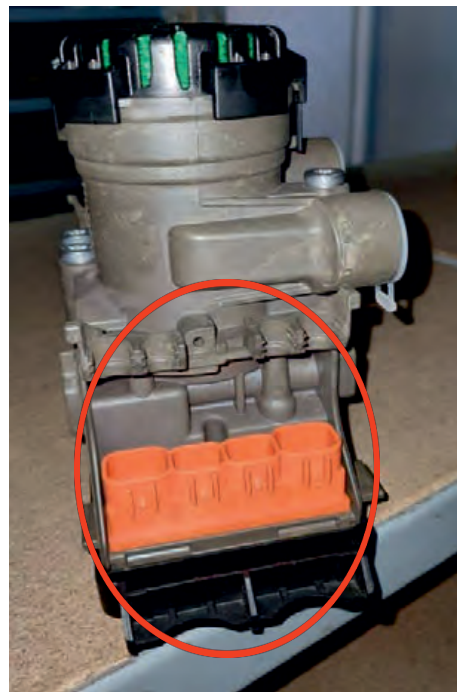
NO MANUFACTURER NUMBER PLATE OR ILLEGIBLE PART NUMBER

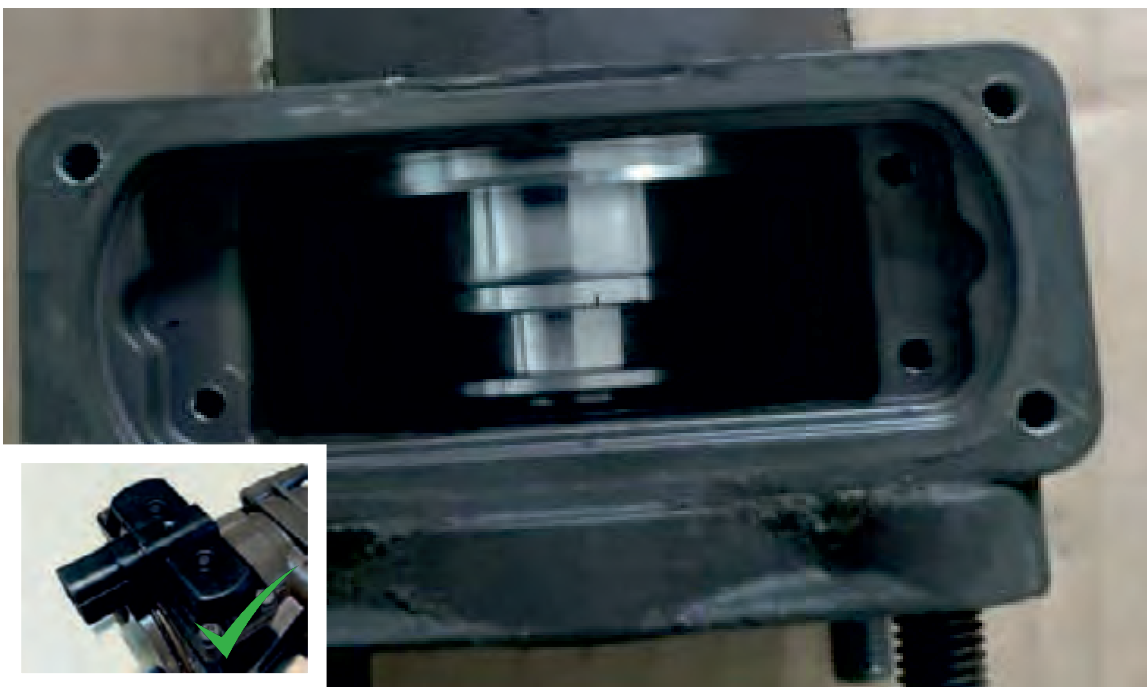
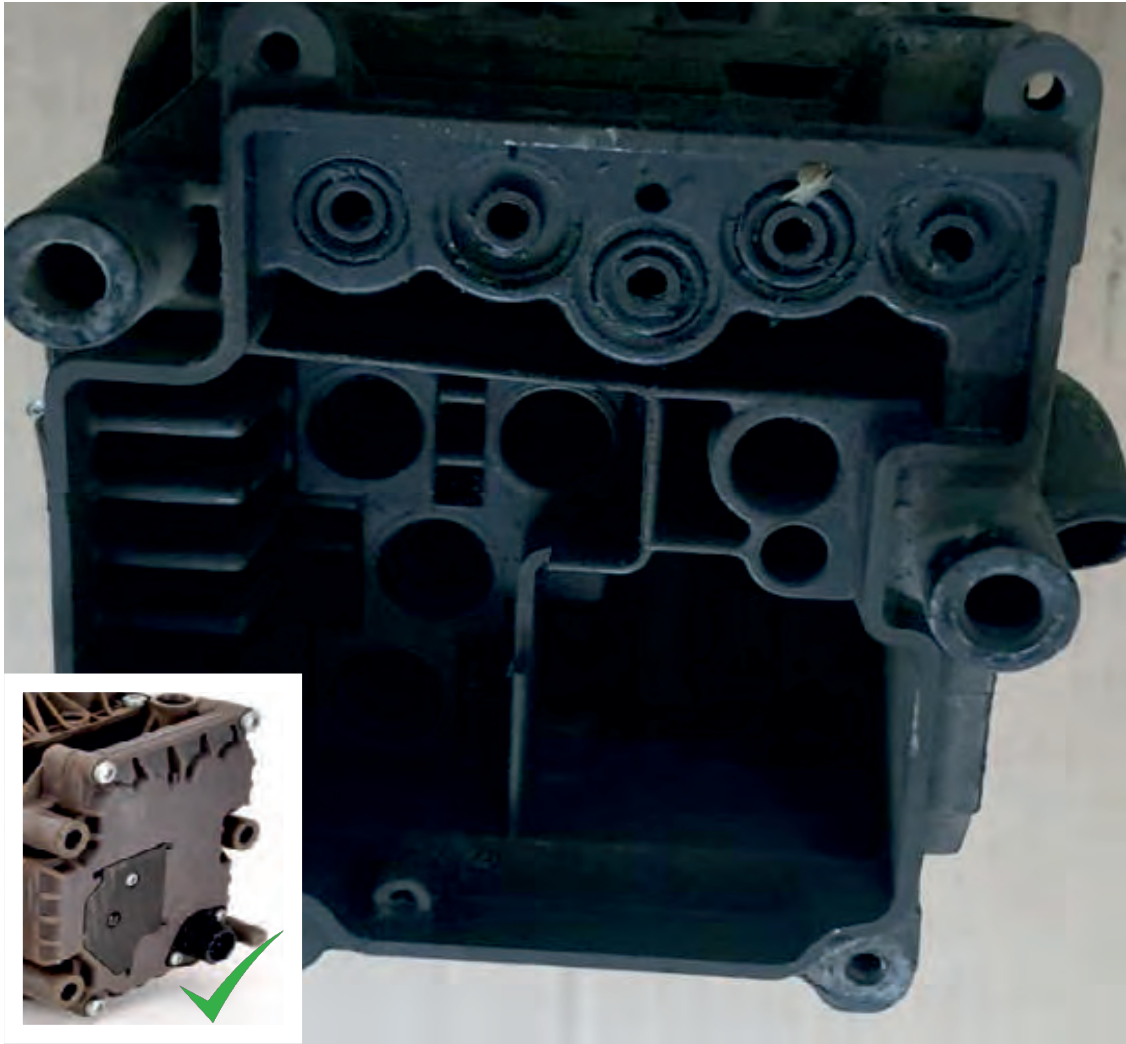


**DAMAGED OR OXIDIZED THREAD IN THE ALUMINUM BODY
AND DAMAGED ELECTRONIC SOCKET**



DISASSEMBLED CORE - MISSING VALVE COMPONENTS: SILENCERS, ELECTRONICS COVERS

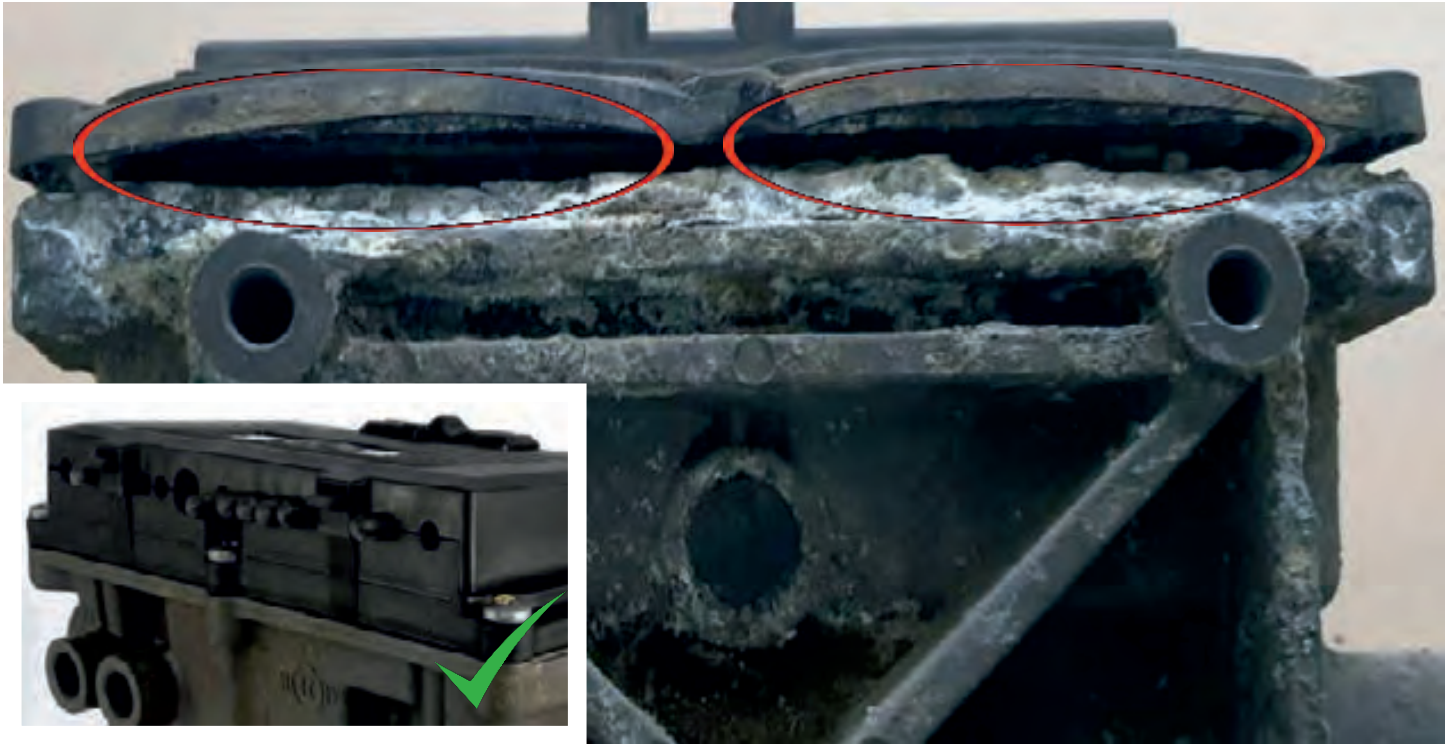




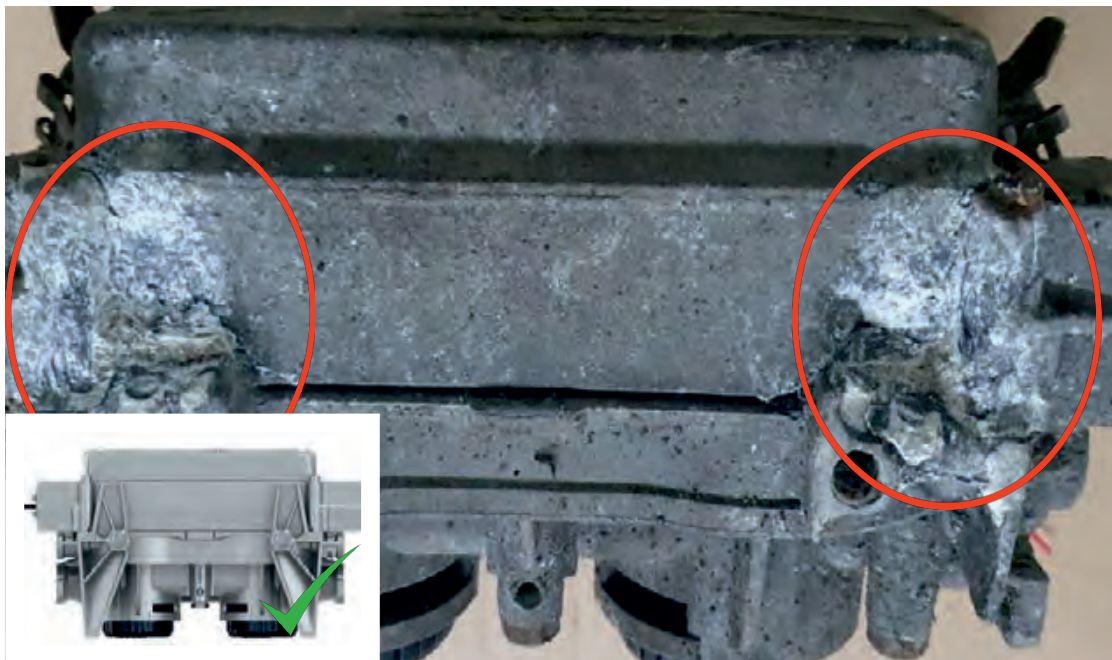
DAMAGED PLASTIC COVER (CRACKED/BROKEN/KNOCKED)

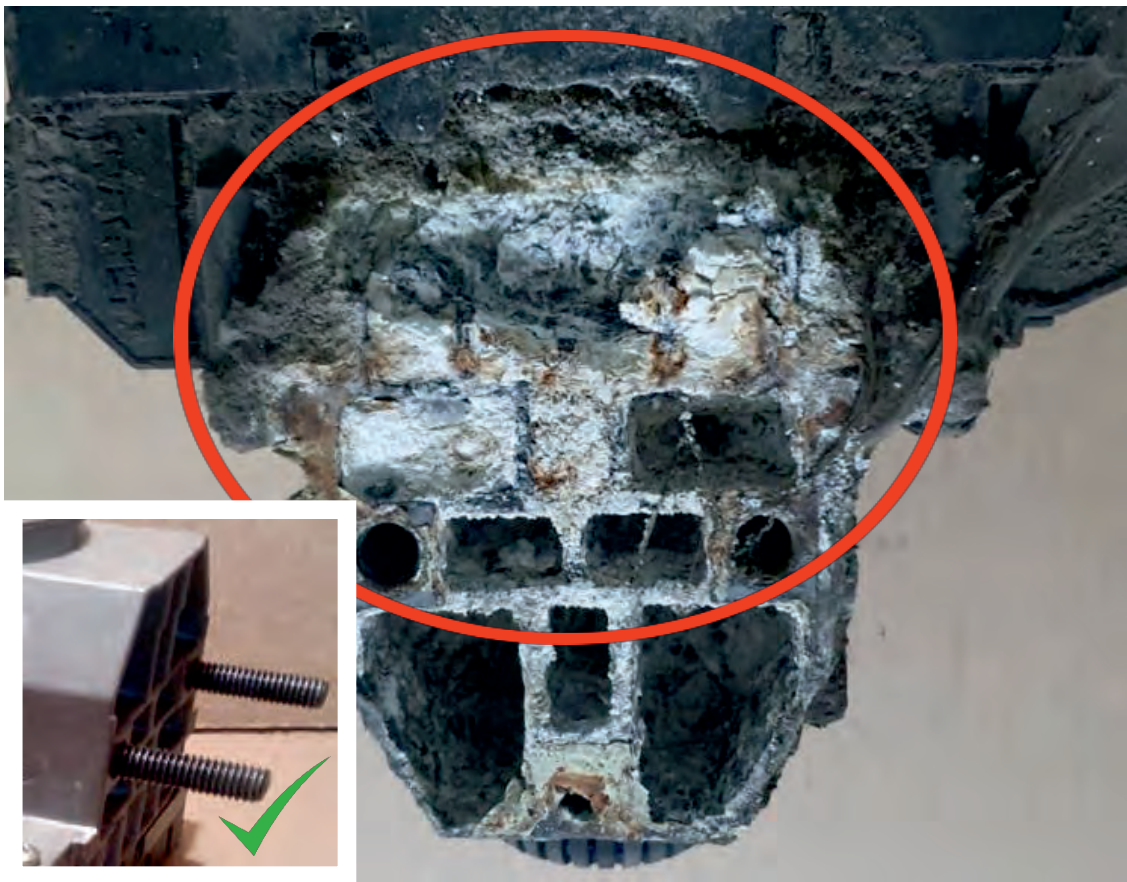


OXIDIZED ALUMINUM BODY FITTED TO THE ELECTRONIC PART

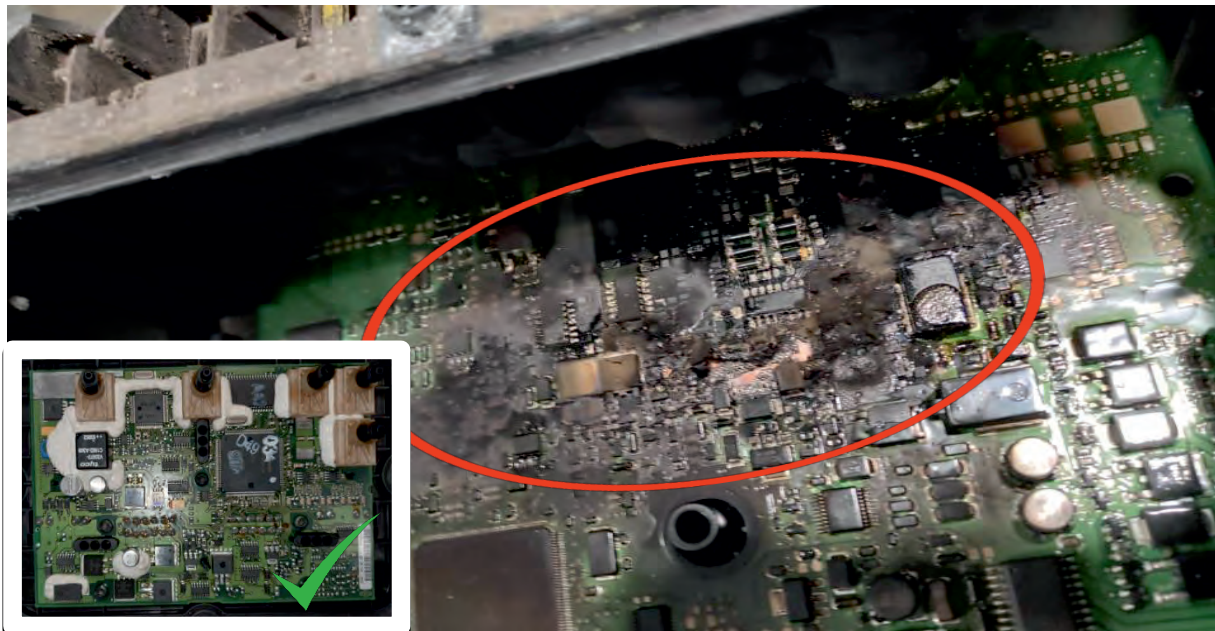
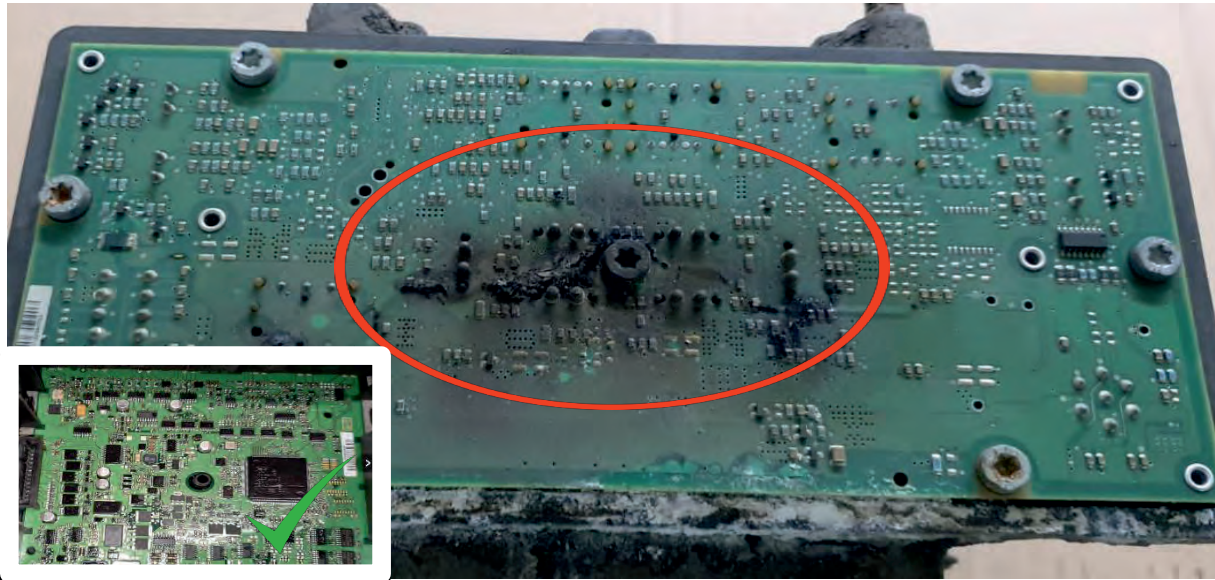


DAMAGED HOUSING

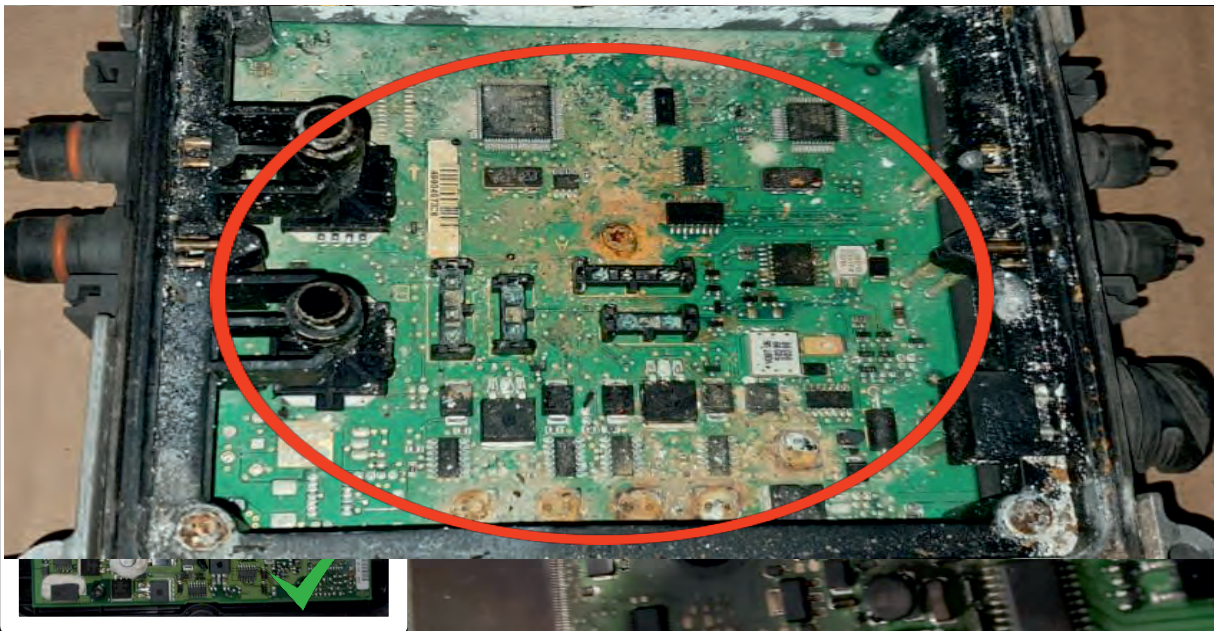
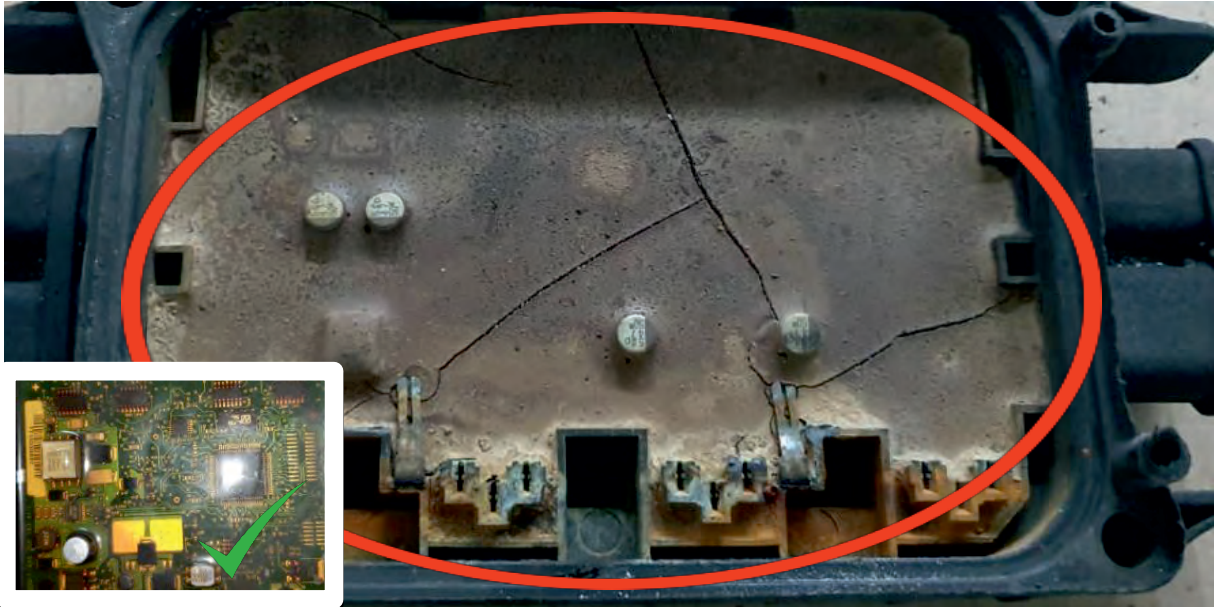




ELECTRONIC BOARD BURNED



EELECTRONIC BOARD BURNED



GENERAL TERMS AND CONDITIONS FOR RETURNING THE EBS CORES

1. Returned used products should have been marked with Original Equipment (OE) part number. Copies of OE products will not be accepted.
2. The returned used products must be complete, completely assembled.
Burned products or any used products that have been damaged or destroyed due to improper handling during disassembly, operation or transportation will not be accepted.
For example: lids must not be dented or cracked (must be airtight), sockets and threads must not be damaged, pins must not be bent or broken.
3. No signs of previous attempts to rebuild the item have been made.
4. Rust on the outer surface of the elements is allowed. Internal surfaces and components may only show signs of rust. Large traces of rust resulting from improper storage are unacceptable