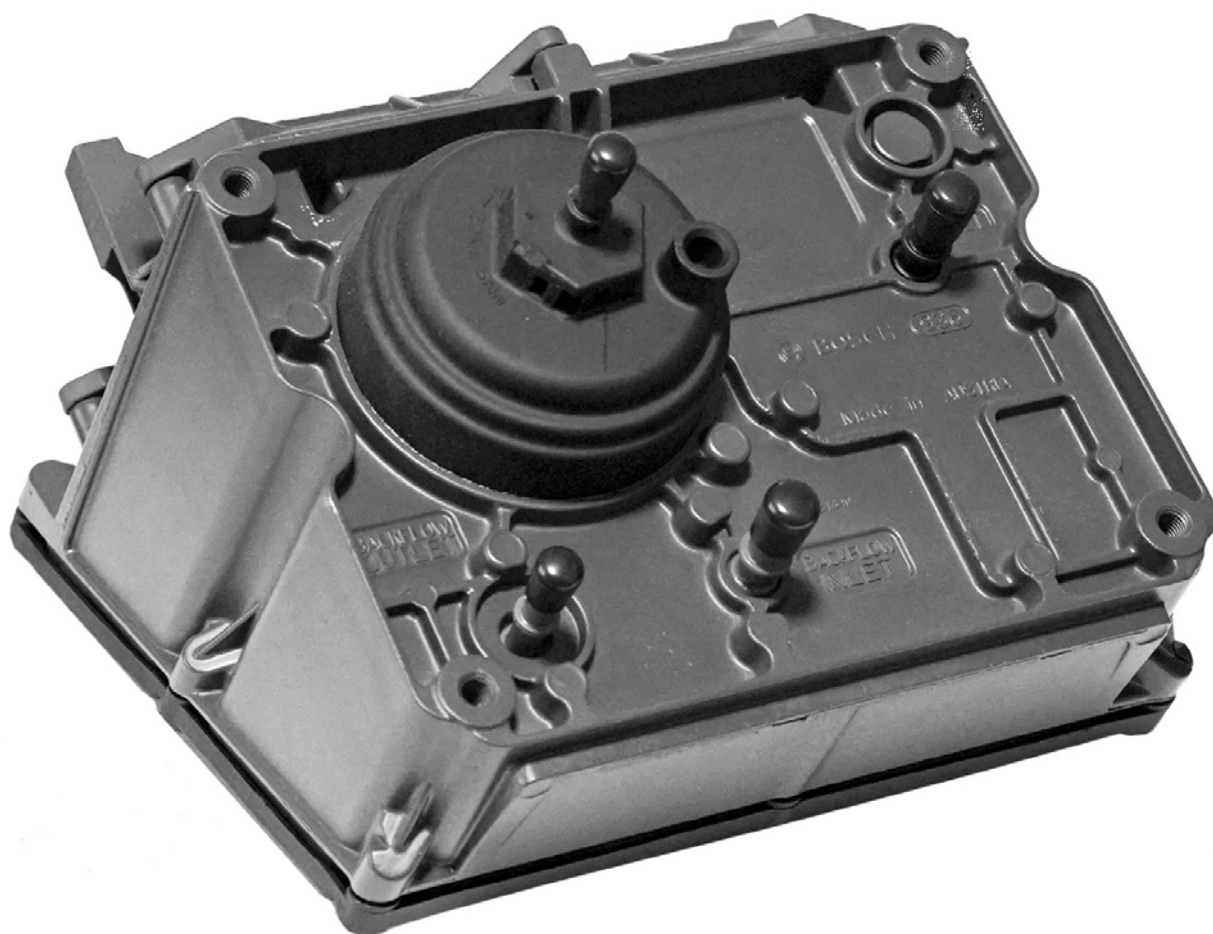
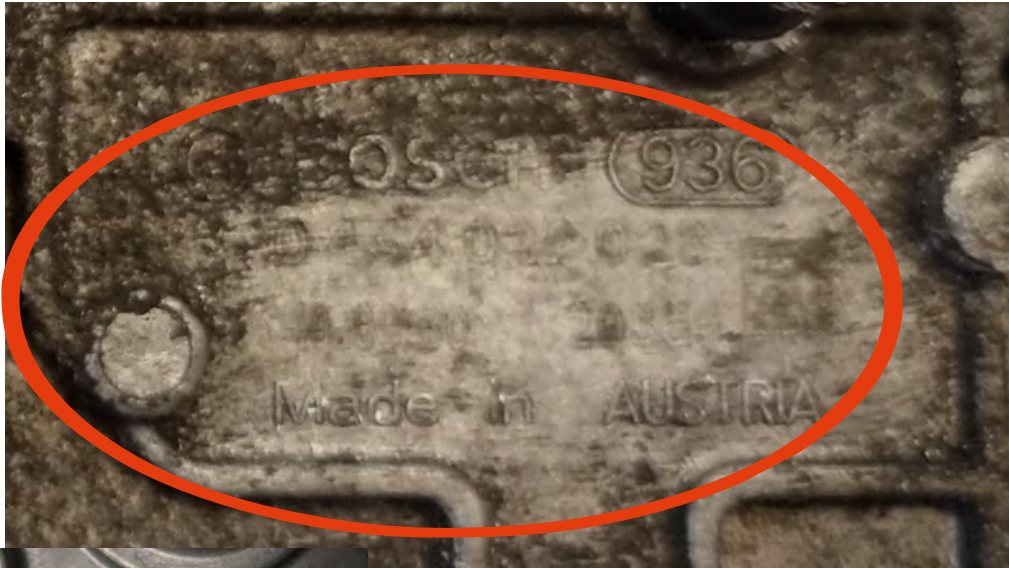


GENERAL TERMS AND CONDITIONS FOR RETURNING THE DENOXTRONIC 2, 2.1 ADBLUE CORE



NO MANUFACTURER NUMBER PLATE OR ILLEGIBLE PART NUMBER



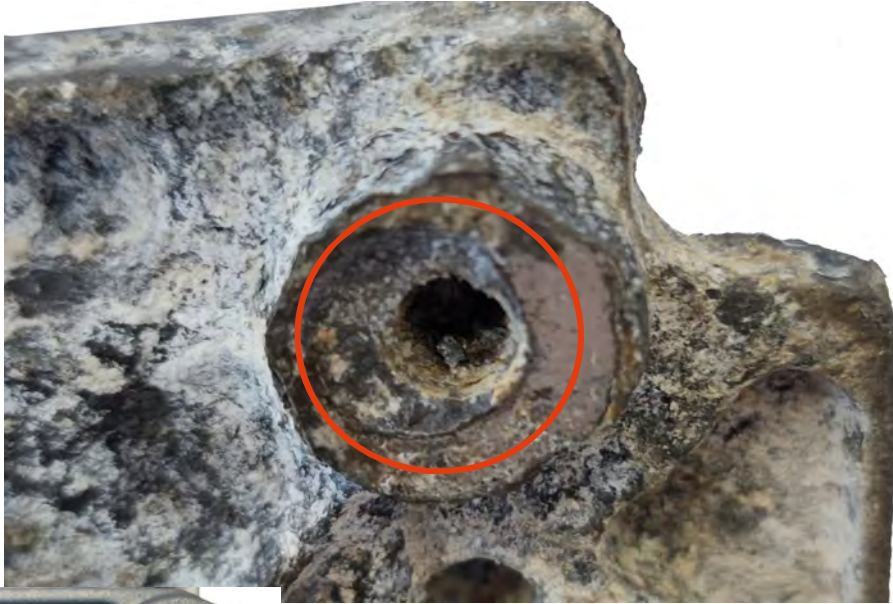
DAMAGED ELECTRONIC SOCKET



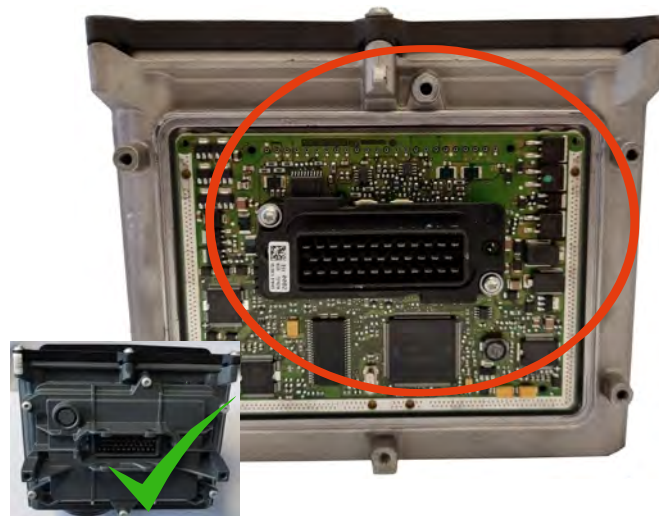
DAMAGED THREAD IN CORE HOUSING



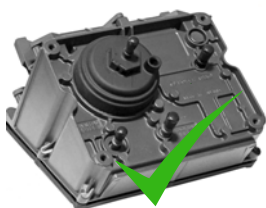
DAMAGED THREAD IN CORE HOUSING



DISASSEMBLED CORE



DAMAGED HOUSING



DAMAGED VENT VALVE



ADBLUE CORE RETURN ACCEPTANCE CRITERIA

1. Returned used products should be the Original Equipment (OE).

Copies of OE products will not be accepted.

2. The products used must be complete, completely assembled.

Burned products or any used products that have been damaged or destroyed due to improper handling during disassembly, operation or transportation will not be accepted. For example: damaged or burned electronic socket, damaged spigot/stud socket, liquid entering the electronic part, damage to the housing.

3. No previous attempts to rebuild the element have been made.

4. Rust on the outer surface of the elements is allowed. Internal surfaces and components may only show signs of rust. Large traces of rust due to improper storage are unacceptable.